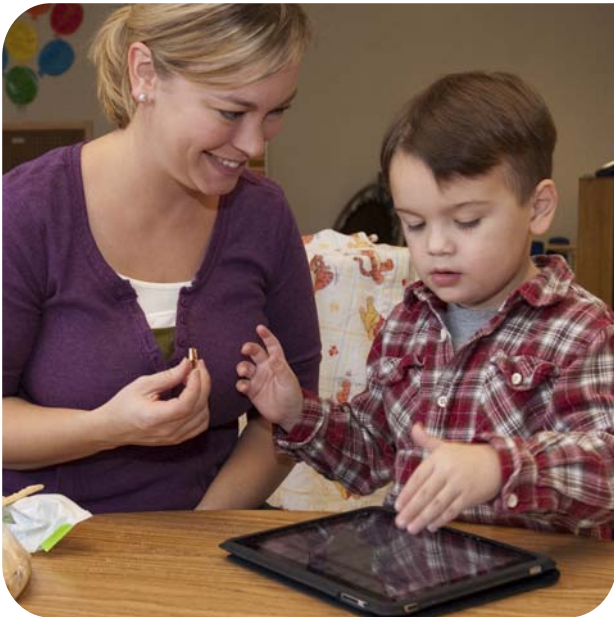




*making*  
**CONNECTIONS**

2010-11 ANNUAL REPORT



**BCIU** Berks County  
Intermediate Unit  
an educational service agency



# from the **director**



In order to assist our member school districts, it is imperative that Berks County Intermediate Unit remain competitive and continue our legacy of sound management and fiscal practices. In these critical times, the BCIU Board of Directors commends our 1,300+ employees of all our personnel groups:

- Pennsylvania Social Services Union (PSSU)
- American Federation of State, County and Municipal Employees, AFL-CIO Local 1160 (AFSCME)
- Berks County Intermediate Unit Education Association
- BCIU Transportation Employees
- BCIU Tech & Support Staff
- PA Key Staff
- BCIU Act 93 Administrators and the Executive Director's Office

Our dedicated employees have placed the interests of the organization ahead of their own personal interests by agreeing to significantly

reduce or freeze their wages and benefits. This selfless response by our staff to the current fiscal problems results in \$895,000 savings for the 2011-12 school year and approximately a \$1.52 million savings over two years.

We are grateful for such dedicated employees and we applaud their noble actions. As a result of these sacrifices, BCIU is able to finalize the 2011-2012 program budgets without the loss of jobs. We are pleased that BCIU strives to control costs for our member school districts and is well positioned to provide quality educational programs and services for the children of Berks County.

A handwritten signature in black ink that reads "John J. George". The signature is written in a cursive, flowing style.

Dr. John J. George  
Executive Director  
Berks County Intermediate Unit





SERVE  
INSPIRE  
PROVIDE

# CORE principles



TEACH  
CULTIVATE  
COLLABORATE  
STRIVE  
ENCOURAGE  
DEVELOP  
ENRICH  
MOTIVATE

## WE STRIVE TO:

**Serve as a resource**  
to Berks County children, schools, and communities by developing expertise and sharing information.

**Provide leadership**  
to promote effective educational practice, advance student performance, and respond to statewide initiatives.

**Communicate systematically**  
with internal and external constituencies to exchange information about programs and services and build strong, trusting, and mutually beneficial relationships.

**Offer dependable, flexible, and cost-effective services**  
to meet the needs of schools and other BCIU clients.

**Cultivate a respectful and collaborative environment**  
that encourages teamwork, motivation to succeed, and institutional pride.

**Develop and deliver high-quality training**  
and professional development programs for Berks County schools, the community-at-large, and BCIU employees.

## new initiatives & MAJOR accomplishments

### BCIU SHINES WITH STARS

During the past year, Child Care and Head Start classrooms received recognition for their advancement in the Keystone STARS program. A voluntary, state-funded program, STARS promotes quality improvements through the attainment of increasingly higher STARS designation levels and through monetary grants. The Hamburg



Head Start classroom earned the STAR 4 designation, the highest level of the rating system. Six BCIU Child Care centers moved from STAR 2 to STAR 3, which required that 12 assistant teachers complete six college-level courses through a partnership with the Reading Area Community College. These achievements offer proof of BCIU's continued commitment to providing high-quality programming to children and their families.

Heidelberg. The classroom is designed for elementary-age students who need additional support in the area of social/emotional development.

The goals of the program are to provide an appropriate public education for students who have had difficulty participating in traditional school environments and to prepare them for a successful return to their home school district.



### EXPANDED CENTER-BASED SUPPORT SERVICES

#### Learning Academy at Lower Heidelberg

To support the needs expressed by school districts, BCIU opened a new classroom in March 2011 at the Learning Academy at Lower

#### Deka Pilot Program-Project SEARCH

Project SEARCH is dedicated to providing education and training to young adults with intellectual and developmental disabilities through an innovative workforce and career development model that benefits the individual, work-



2010  
2011

## board of directors

Timothy Heffner, President  
 Robert Quinter, Jr., Vice President  
 Ralph C. Richard, Secretary  
 Beverly Daniels, Treasurer  
 John Crossley  
 Robert Lowry  
 Tammy Stamer Wert  
 Jo Ann Hartzell  
 Brent Worley  
 Brian Specht  
 Carl Ziegler  
 Donald B. Raifsnider, Jr.  
 Yvonne Stroman  
 Joseph C. Buda  
 Evelyn F. Fox  
 Gary McEwen  
 Carol Reid  
 Anne P. Seltzer | Carolyn Bamberger

- Fleetwood Area
- Exeter Township
- Oley Valley
- Antietam
- Boyertown Area
- Brandywine Heights Area
- Conrad Weiser Area
- Daniel Boone Area
- Governor Mifflin
- Hamburg Area
- Kutztown Area
- Muhlenberg
- Reading
- Schuylkill Valley
- Tulpehocken Area
- Twin Valley
- Wilson
- Wyomissing Area

### OFFICE OF THE EXECUTIVE DIRECTOR

**Dr. John J. George**  
Executive Director

**Dr. Jill M. Hackman**  
Assistant Executive Director

### OFFICE OF BUSINESS SERVICES

**Carl Blessing**  
Director & CFO

**Cynthia A. LePage-Sauppee**  
Assistant Director, Finance

**Chris Celmer**  
Assistant Director, Operations



### OFFICE OF HUMAN RESOURCES

**Rob Rosenberry**  
Director

**Antonia R. Cramp**  
Assistant Director

### OFFICE OF EARLY CHILDHOOD AND STUDENT SERVICES

**Cheri L. Woyurka**  
Director

**Wendy M. Steensland**  
Assistant Director

### OFFICE OF PROFESSIONAL DEVELOPMENT AND CURRICULUM

**Dr. Bonita K. Troxell**  
Director

**Dr. Cynthia S. Mierzejewski**  
Assistant Director

### OFFICE OF INNOVATION AND TECHNOLOGY

**William F. Miller**  
Director & CIO

**Cherie Zimmerman**  
Assistant Director



## MANAGEMENT & ADMINISTRATIVE

ACCESS Accounting Services  
Accounting & Related Services  
Business Administration Consulting  
Central Inventory & Warehousing Services  
Community Revitalization Assistance  
Document Imaging & Microfilm Services  
FBI Fingerprinting  
Guest Teacher Training Program  
Joint Purchasing  
Lamination Services  
Meeting Room Rentals  
Payroll Services  
Public Relations Services  
Pupil Transportation Services  
Word Processing Services

## EARLY CHILDHOOD & STUDENT SERVICES

Academic Challenge  
BCIU Child Care  
Berks County Head Start  
Brain STEPS Program  
BUILD Pennsylvania Sponsorship  
Child Care Information Services  
Deaf & Hard of Hearing Classrooms  
Driver Education Program  
Early Childhood Assessment &  
Accountability Project  
Early Childhood Special Needs Conference  
Early Learning Network Project  
Early Intervention Program  
Education Program at Berks County Jail  
Education Programs in the Berks County  
Youth Center (Detention & Shelter)  
Education Programs at Caron Treatment Center  
Extended School Year Program  
Head Start Collaboration Project  
Head Start Supplemental  
Homeless Student Program  
Immigration Customs Enforcement  
(ICE) Educational Program  
Inclusive Practices—Early Intervention  
Individuals with Disabilities Education  
Act Services  
Itinerant Services to Districts  
The Learning Academy Alternative Education  
Program at Alsace  
The Learning Academy Elementary Emotional  
Support Program at Lower Heidelberg  
The Learning Academy Emotional Support  
Program at Alsace  
Medical Assistance ACCESS Program  
Multidisciplinary Evaluation (MDE) Team Pilot for  
the Infant/Toddler Early Intervention Program  
Multiple Disabilities Support Classroom

Music (Jazz Assembly) Programs  
Nolde Environmental Education Program  
Nonpublic School Services (Act 89)  
Spruce, Partners, and Transitions Programs  
located at the Reading Hospital  
Pregnant & Parenting Teen Program  
Pre-K Counts  
Pre-K to K Transition Project  
Preparation for Adult Life  
Project Elect/Fatherhood Initiative  
Project Search—Deka Pilot Program  
School-age Special Education Related Services  
Secondary Art Exhibit  
Title I Summer Program  
Transition House Program  
You Be the Chemist  
Youth Concerts

## INFORMATION TECHNOLOGY

E-rate Consulting Services  
Financial Software Services  
Network Services  
Printing and Duplicating Services  
Special Education & Student Management  
Software Services  
Tax Billing  
Technology Leadership Connections  
Technology Maintenance & Repair Services  
Technology Professional Development  
Web Services

## OFFICE OF PROFESSIONAL DEVELOPMENT & CURRICULUM

Act 45 and Act 48  
Asian Studies Collaborative  
Assessment Anchors  
Assistive Technology Pragmatic Organizational  
Dynamic Display (PODD)  
Augmentative & Alternative Communication  
(AAC) Team Training  
Autism Academy  
Behavior Academy  
Benchmarks K–12  
Berks County Math & Science Partnerships  
Berks County Transition Coordinators' Council  
Berks Online Learning (BOL)  
Career Education and Work Standards (CEW)  
Career Pathways  
China Exchange Initiative  
Common Inservice  
Computer Fairs  
Continuing Professional Education (CPE)  
Continuum of Skills Training  
CPI—De-escalation/Non-Violent Crisis  
Intervention Training  
Crisis Management Training  
Curriculum Mapping

# 2010-11 programs & SERVICES

Data-Driven Decision Making  
DIBELS  
Digital Video Production for Kids  
Distinguished Educators Collaboration  
Educational Technology Services  
Emotional Support Classroom Series  
e-Strategic Planning Network  
Faculty-to-Faculty Dialogue  
Federal Programs  
Framework for Teaching  
4Sight Benchmarks  
Gifted Network  
Increasing Content Area Comprehension  
Induction Program  
inside Berks business (iBb)  
Language Arts Curriculum  
Language Essentials for Teachers of Reading  
and Spelling (LETRS)  
Leadership Series  
Literacy Design Collaboration  
Mandarin Chinese Summer School  
Mathematics, Science, & Technology Initiatives  
Microsoft Office Trainings  
Paraeducator Training  
PA Inspired Leadership Initiative  
PA Keys  
PA Value-Added Assessment System (PVAAS)  
PD 360  
Performance Pathways  
Pre-K–16 Council  
Project 720  
Reading Apprenticeship  
Reading First/No Child Left Behind  
Reading Mastery Training  
Reading Supervisors Council  
Response to Instruction & Intervention (RtII)  
RtII Math & Literacy Expo  
Safe & Drug-Free Schools  
Safety Care Training  
School Improvement Planning  
Secondary Curriculum  
Student Assistance Program (SAP & ESAP)  
Summer Workshops  
Teacher Collaboration Day  
TIMS Training  
Virtual Conferences  
World Language Instruction Network

# making CONNECTIONS



*Jill Mittl, administrative assistant, supports BCIU's Office of Human Resources, while Carl Blessing, chief financial officer, directs the Office of Business Services. Their "back office" roles help to keep BCIU operating smoothly and efficiently.*

place, and community. The primary goal is to secure competitive employment outcomes for each of the student graduates.

This past year, BCIU entered into a partnership with Deka, Berks County MHMR, and Service Access Management to start a Project SEARCH pilot program at Deka. The classroom, which opened in February 2011, served two students for the remainder of the school year and is expected to serve up to 12 students in 2011–12.

## **Transition House II**

Established in 2004, BCIU's Transition House program assists students in the transfer of previously

learned skills from a school setting to a community-based environment where direct instruction is provided so that students can attain the highest level of independence possible. Due to the success of the Transition House I program in Shillington and an influx of school district referrals resulting in an annual waiting list, BCIU laid the foundation this past year for offering a parallel educational program from a residence located on Daniel Boone Area School District property. Starting with the 2011–12 school year, BCIU will be better able to accommodate students from school districts that are geographically closer to the Birdsboro site.

## **INTEGRATING TECHNOLOGY INTO INSTRUCTION**

### **New Technology Initiatives in School-Age Special Education**

This past year, the BCIU Special Education program expanded the use of technology in the classroom with the addition of iPads, iPod Touches, and touch laptops. Technology was introduced in our autistic support classroom and multiple disabilities support classroom. Students responded positively and increased their engagement time in educational activities and used the new devices to communicate wants and needs.

### **Assistive Technology**

During the second year of a two-year grant provided by the American Recovery and Reinvestment Act, BCIU continued to implement inclusion strategies to support children who use assistive technology, ranging from communication software and hardware (e.g., iPads, GoTalk 9) to devices

# new initiatives & MAJOR accomplishments



that support physical and occupational needs (e.g., cube chairs, adaptive toys). Funds were also used to improve the expertise of Early Intervention Preschool staff as well as Early Childhood partners, including BCIU Child Care and Head Start. The assistive technology promoted and supported the successful inclusion of many young children in programs designed for children who are typically developing.



## Re-Establishment of the Right to Education Local Task Force

The Right to Education Local Task Force was created in 1972 as part of the P.A.R.C. Consent Agreement that provided for a free, appropriate public education for children with mental retardation. In 1975, the Right to Education was extended by state regulations to include learning disabilities, physical handicaps, emotional difficulties and hearing, visual, speech, and language impairment.

The task force functions as an independent organization of parents and other residents of Berks County who are interested in working with school districts, BCIU, and community agencies to further

the rights of students with special needs. Its purpose is to make recommendations that assist in improving, strengthening, expanding, and monitoring programs and services for school-age children with disabilities. The task force is facilitated by elected officials and the Berks County Intermediate Unit and is supported by the 18 school districts of Berks County.

This past year, the BCIU took a leadership role with the ARC to re-establish the local task force. Parents, advocates, the ARC, BCIU, and local school district representatives participated in five meetings and explored professional development topics such as inclusion and transition planning.

# making CONNECTIONS



*While Maryzel Herrera, Head Start teacher, (L), and Cynthia Thomas, bus driver, have very different job responsibilities, they share a true concern for the welfare of children and enjoy their daily interactions with them.*

## PROFESSIONAL DEVELOPMENT

### Induction Series - Tools & Techniques for Beginning Teachers

In response to a direct request from school districts, BCIU developed a series of six trainings for educators entering their first three years of teaching. The after-school trainings covered topics of vital importance to new teachers, such as establishing a positive culture for learning, the role of data in instruction, professional learning communities, and differentiated instruction.

### Teacher Collaboration Day

BCIU and school district coaches involved in the Teaching and

Learning in the 21st Century project offered a unique instructional opportunity for world language, language arts, and English teachers. Teachers of grades 7–12 attended a variety of workshops and shared best practices with each other to sharpen the skills needed to deliver high-quality instruction in 21st century classrooms.

## ASIAN STUDIES COLLABORATIVE

### Mandarin Language Instruction

BCIU's Asian studies programs expanded greatly during 2010–11, most notably in the delivery of Chinese language instruction. A partnership with the Confucius Institute at the University of Pittsburgh enabled a 400 percent

increase in the number of Chinese guest scholars who were teaching in the region. To maximize the impact of its teachers, BCIU launched Mandarin language programming via distance learning technology from two new studios located at the Commons Boulevard facility. The implementation



# direct RECIPIENTS of services

BCIU  
programs  
for  
**Parents,  
Educators,  
& Staff**

## ADULTS SERVED

Continuing Professional Education	586
FBI Fingerprinting	3,025
First Aid, Health, Transportation, & Fire Safety Trainings	1,990
Guest Teacher Training	743
Online Media Booking	600
Office of Professional Development & Curriculum (OPDC) Professional Development	15,226
OPDC Professional Networks	1,161
OPDC Summer Workshops	586
PIAA Officials	434
Technology Training	1,047
Video-on-Demand	17,000
<b>TOTAL</b>	<b>42,398</b>

## programs for Children & Youth

## CHILDREN SERVED

ACCESS	887
Act 89	500
Alternative Education	1,393
Child Care	572
Driver Education Program	470
Early Intervention Services	2,207
Extended School Year (ESY) Program	121
Environmental Education: Nolde Forest	10,180
Fatherhood Initiative and Project ELECT	169
Head Start	769
PA Homeless Children's Initiative	3,596
Office of Early Childhood & Student Services Student Enrichment Events	21,000
Pre-K Counts (BCIU)	104
Pre-K Counts (statewide)	11,461
School-Age Special Education	711
Transportation Services	11,240
<b>TOTAL</b>	<b>65,380</b>

## Social Service programs for Families

## CLIENTS SERVED

Child Care Information Services (CCIS) Children	6,939
CCIS Resource and Referrals	10,333
CCIS Applications	2,195
<b>TOTAL</b>	<b>19,467</b>

*The Homeless Children's Initiative served more than 3,500 students this past school year. BCIU staff, school employees, and community representatives distributed donated backpacks and school supplies to homeless students throughout the region.*



# making CONNECTIONS



Marvin Blanding, custodian, (L), and Rich Loveless, systems specialist, serve the BCIU by providing custodial and information technology services, respectively, to the agency's customers, partners, and staff.

of these capabilities has uniquely positioned BCIU as a provider of video conference instruction in this critical language and has presented opportunities to extend the reach of the program across Berks County and beyond.

## Confucius Classroom

In recognition of the strength of BCIU's programming in Chinese language delivery, the Chinese government awarded BCIU with a five-year agreement that officially recognizes BCIU as a Confucius Classroom, thereby providing the agency with additional funding and resources to support the growth of its Chinese culture and language initiatives.

BCIU is the only intermediate unit or educational service agency to be awarded this designation.

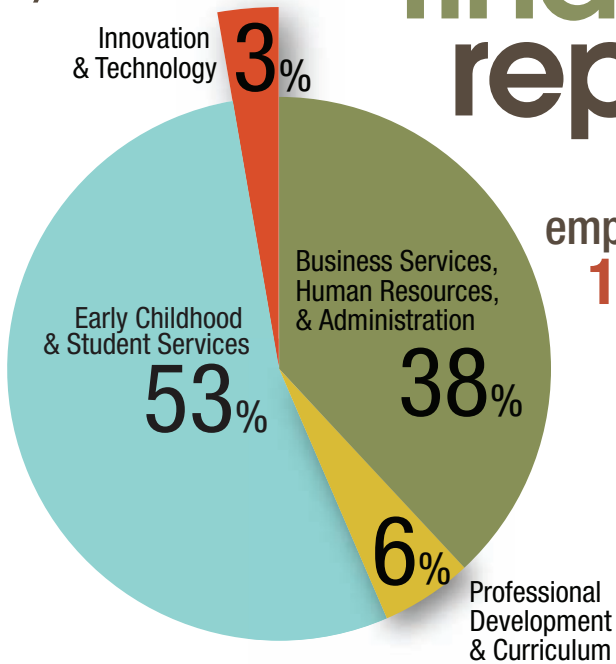
## China Exchange Initiative

With grant funding from the Freeman Foundation, BCIU facilitated local participation in the China Exchange Initiative, whose purpose is to support educational exchange programs between schools in the United States and schools in China. The Administrator Shadowing Project provided a unique opportunity for school officials from the two countries to personally observe one another's educational systems. In October, Pennsylvania administrators hosted educators from China, and in April, four Berks County administrators visited their counterparts in China.

*Students applied their knowledge of geography, economics, and politics to negotiations between the countries participating in simulated Six-Party Talks.*



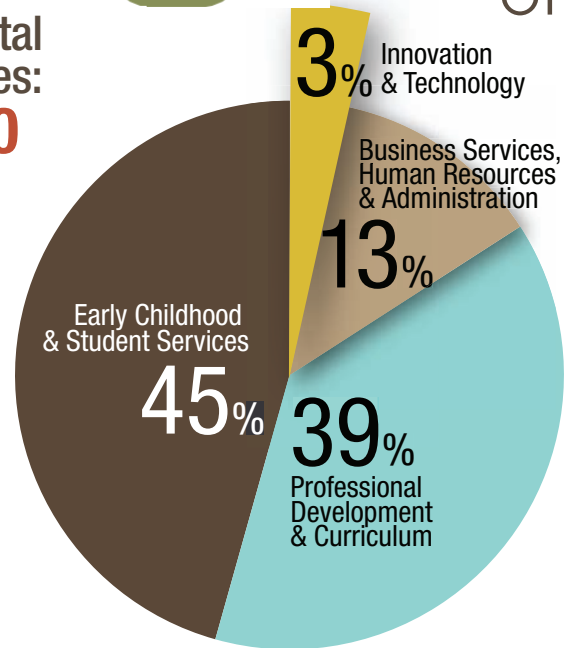
# employees by office



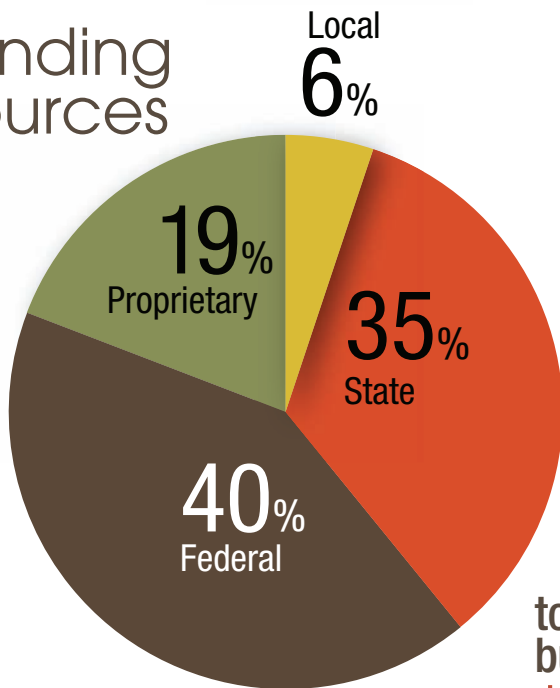
# 2010-2011 financial report

total employees:  
**1,260**

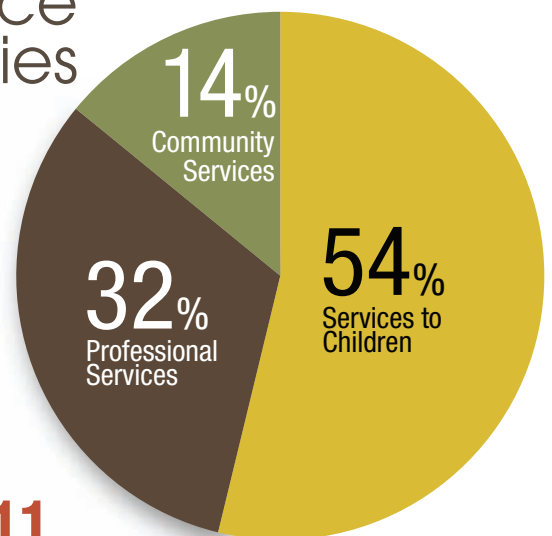
# budgets by office



# funding sources



# service categories



total budgets:  
**\$195,356,611**

# making CONNECTIONS



*Josie Brunner, educational consultant, and Susan Machuzick, Early Intervention paraeducator, devote their energies to helping children with special needs learn, communicate, and grow.*

## **BUSINESS VENTURE WITH I-LEAD CHARTER SCHOOL**

Meetings with representatives of the I-LEAD Charter School resulted in an agreement to provide financial and software support to the first charter school in Berks County. BCIU will provide financial services, including payroll, invoicing, and financial reporting, as well as support for student management software and state-mandated reporting functions through the use of Sungard Public Sectors' eSchoolPLUS® and IEPPLUS® applications, both hosted by BCIU.

In September 2011, I-LEAD will open its doors to 175 high school

students who are at risk and not currently enrolled in school.

## **EXTENDED SOFTWARE SERVICES** **IEPplus® Special Education Software**

BCIU extended its software offerings to include IEPplus® from Sungard Public Sector K-12.

Negotiated as a consortium purchase, considerable savings were realized in license and maintenance costs, as well as professional service fees from the vendor. IEPplus®, a completely web-based application, offers enhanced usability features for staff, compliance with state reporting requirements, and auto-

mated integration with eSchoolPLUS® and PerformancePLUS®, which are utilized in many districts throughout the county. Tulpehocken Area School District migrated to the new tool in April 2011; summer implementations are scheduled for five other districts.

## **eTaxTrax Software Suite**

The eTaxTrax™ tax and billing system expanded in two directions this past year. The suite was enhanced to include features and functionality necessary for offering real estate, per capita, and utility billing services to townships and municipalities. Twenty new clients purchased this service, resulting in the production of nearly 79,000 additional bills. Also, Reading School District joined an existing client base of 25 school districts. Growing the software suite and the client base brings additional savings to all clients through shared resources and volume purchasing.



*Staff members of Child Care Information Services donned hard hats to tour the renovations underway at the River's Chase building.*



### **Regional Wide Area Network (RWAN)**

With support from a \$1.18 million award from the Pennsylvania Department of Education to offset the cost of developing the RWAN, BCIU led a consortium of six intermediate units in the rebidding of each agency's regional wide area network. Contracts were awarded to Verizon and Windstream Communications to provide the infrastructure and Internet access to connect most of Berks County schools to the rest of the world. The upgraded infrastructure provides a more reliable, all-fiber network with expanded capacity, while saving each of the member districts more than \$10,000 per year. In addition, RWAN members

have access to PAIUnet, a private high-speed network that connects all Pennsylvania intermediate units and most schools in the commonwealth to each other.

### **RENOVATION PROJECTS** **BCIU Transportation Center**

The BCIU Transportation Center, located at Route 61 and Berkley Road, opened in March 2011. The facility, previously owned by Penske Truck Leasing, includes a large parking lot for the BCIU bus and van fleet and a refurbished building that serves as the base of BCIU's transportation operation. New features, such as the overhead oil delivery system, service trench, and bus washing/de-icing bay, have made vehicle mainte-

nance safer and more productive. In addition, consolidating many aspects of the Transportation operation at one central location has produced multiple benefits in capability, safety, and efficiency.

### **River's Chase**

Renovation of BCIU's administrative office building at River's Chase began in February 2011. An urgent need to replace the leaky roof and malfunctioning HVAC system necessitated the project, which is scheduled for completion in March 2012. The renovation is designed to yield additional positive outcomes, such as energy-efficient windows, standardized work spaces, and an enlarged parking lot.



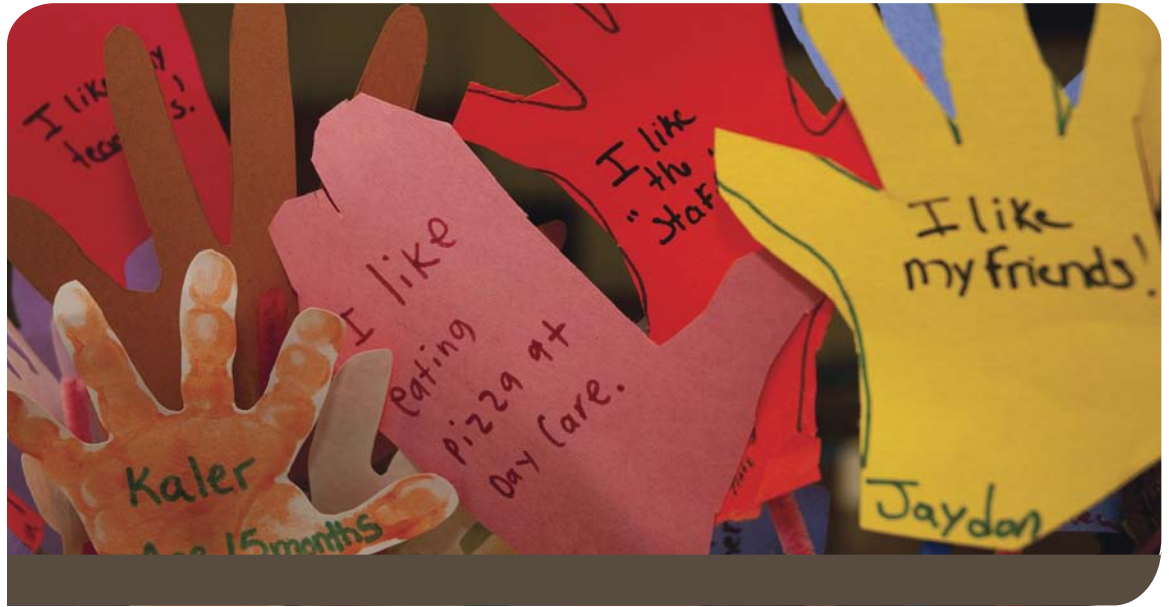
# COMMUNITY involvement & partnerships

Albright College  
 Alvernia University  
 ARC of Berks County  
 Asian Studies Center at the University of Pittsburgh  
 Autism Society of Berks County  
 BCTCC (Berks County Transition Coordinating Council)  
 Berks Agricultural Center  
 Berks Business Education Coalition (BBEC)  
 Berks Community Action Program  
 Berks County Assistance Office - Local Management Committee  
 Berks County Children and Youth Services  
 Berks County Community Foundation  
 Berks County Conservancy  
 Berks County Workforce Investment Board  
 Berks County Workforce Youth Council  
 Berks County Youth Center  
 Berks County Youth Round Table  
 Berks Early Childhood Education Council (BECEC)  
 Berks TALKLINE Board  
 Berks Women in Crisis  
 BICC (Berks Interagency Coordinating Council)  
 Care for Kids Coalition  
 Caron Foundation  
 CASSP (Berks County Children & Adolescent Service System Program)  
 China Exchange Initiative  
 Chinese Flagship Program at the Ohio State University  
 Chinese Language Association of Secondary-Elementary Schools  
 Community Prevention Partnership ELECT and Nurse-Family Partnership Steering Committee  
 Council on Chemical Abuse  
 County of Berks Alternative Dispute Resolution Review Board  
 Eastern PA Association for the Education of Young Children (EPAEYC)

Eastern Region of PA Association for Supervision & Curriculum Development  
 FairView Counseling and The Play Therapy Center Board of Directors  
 Family Promise  
 Freeman Foundation  
 GoggleWorks  
 Governor's Institute for Early Childhood  
 Greater Berks Food Bank  
 Greater Reading Chamber of Commerce & Industry  
 Immaculata University  
 Japan America Society of Greater Philadelphia  
 Joanna Furnace  
 John Paul II Center for Special Learning Advisory Board  
 Junior Achievement of Berks County  
 Kutztown University of Pennsylvania  
 Legacy House  
 Lehigh University - Pre-K Rtl  
 MAWA Eastern PA Leadership Group  
 Military Child Education Coalition  
 Miller Center for the Arts  
 National Consortium for Teaching About Asia (NCTA)  
 National East Asian Language Resource Center  
 Nolde Forest Environmental Education Center  
 OCDEL - Early Learning Council  
 OCDEL - Kindergarten Advisory Group  
 OCDEL - Pre-K Counts Advisory Committee  
 OCDEL - Preschool Pelican Workgroup  
 OCDEL - STARS Advisory Committee  
 OCDEL Early Learning Network Advisory Committee  
 Office of Vocational Rehabilitation  
 Olivet's Boys and Girls Clubs  
 Opportunity House  
 PA Child Care Association (PACCA) - Governance Committee

PA Council for Exceptional Children - Division of Early Childhood  
 PA School-Age Child Care Alliance (PENN SACCA)  
 Parent Education Committee - Care for Kids Coalition  
 Penn State University  
 Pennsylvania Coalition to Prevent Teen Pregnancy  
 Pennsylvania State Police  
 People First Initiative  
 Project Search  
 Pupil Transportation Association of Pennsylvania Board of Directors  
 Reading Area Community College  
 Reading Communities that Care Collaboration  
 Reading High School Teen Pregnancy Steering Committee  
 Reading Public Museum  
 Reading Symphony Orchestra Education Committee  
 Schuylkill County Conservation District  
 Service Access Management  
 Special Needs Committee - Care for Kids Coalition  
 The Reading Hospital Center for Mental Health  
 United Way of Berks County  
 University of Pennsylvania East Asian Studies Outreach Center  
 University of Pittsburgh Confucius Institute  
 WalkBikeBerks  
 Weed-N-Seed  
 World Affairs Council of Greater Reading  
 YMCA of Reading  
 Young Women's Future Symposium Committee





*providing quality resources,  
innovative programs,  
and responsible leadership  
to meet the educational  
and social service needs  
of our children, schools,  
and communities*

**BCIU** Berks County  
Intermediate Unit  
an educational service agency

*helping schools excel  
helping children learn*

1111 Commons Blvd.  
P.O. Box 16050  
Reading, PA 19612-6050  
610-987-2248  
FAX 610-987-8400  
TTY 610-987-8401  
[www.berksiu.org](http://www.berksiu.org)